



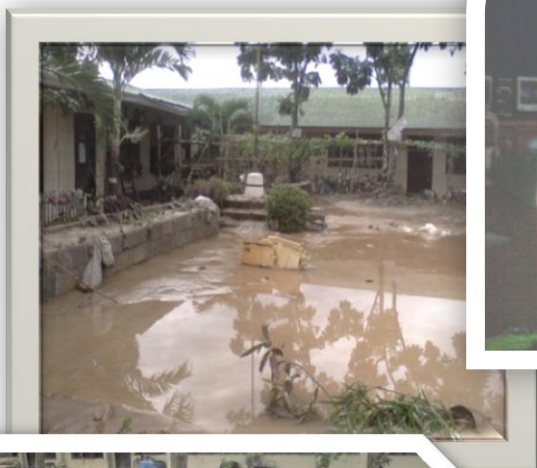
Republic of the Philippines
Department of Education
Region X-Northern Mindanao
Division of Iligan City



ILIGAN CITY EAST HIGH SCHOOL-SANTIAGO ANNEX

Santiago, Iligan City
Tel No. 223-3666

SCHOOL DISASTER RISK REDUCTION MANAGEMENT PLAN



Prepared by:

REYNILDA C. ALFEREZ, Ph.D.
School Head

Researcher:

AILEEN C. BOLOCON
SDRRM Coordinator



I. INTRODUCTION

A. Purpose of the Plan

Iligan City East High School – Santiago Annex is located strategically alongside the city dump site and 50 meters away from the seashore. Residence near the riverbank could be affected by mudflow in case of major landslide upslope.

The SDRRMP is highly important to be undertaken by the ICEHS-Santiago Annex as it was badly affected by the December 17, 2011 tropical storm Sendong and moreover, declared as Danger Zone by the Geoscience Division of the Mines and Geoscience Bureau of DENR Region X. The school lies in a low lying area which is prone to flood when heavy rains and high tide simultaneously happened. This also caused the siltation of Bayug River as it is situated a few meters away from Bayug River. The presence of illegal logging groups in the hinterlands may worsen the impact of flashfloods and typhoon.

The future may be bleakly, thus planning this time is good. The school, at hand, must continue to operate normally. Any thought of disaster in the future must be put behind in the mind so as to live a normal life until when a hazard comes. It is, however wise, that the normal movement today of the school, is fortified by the SDRRMP.

To point reasons for the plan is obvious. It is because anytime now, or tomorrow may be, the natural or man-made calamities will strike in the school.

B. DepEd International Policies on Disaster Preparedness and Response.

The Department of Education is a member of the NDCC and one of the member agencies of the Technical Management Group (TWG) under the Philippine Disaster Management System. The Department acts as the resource and recommendatory body in support of the functions of the NDCC. Based on the NDCC calamities and Disaster Preparedness Plan, the DepEd is mandated to:

- ✓ Organize reaction team in the department proper as well as the regional division offices, bureaus it including the schools, BSP, GSP and other institutions of learning areas.

- ✓ Make the attainable, suitable school building nearest the affected area as evacuation center.
- ✓ Assist in the public educational campaign through integration in the school curricula of subject relative to the different committees. There causes and precautionary measures. Dep-Ed has integrated classroom management copies in the teachers and the parents.
- ✓ Undertake, compiles and provides report of damages and submits the same report to the classrooms NDCC.
- ✓ Disseminate weather information to the general public through the school population and makes the necessary announcements as regards the suspension of classes.
- ✓ Initiates the preparation/production of circular materials on disaster preparedness, in coordination with other member-agencies, and make these available to schools.
- ✓ Undertake rehabilitation of typhoon-damaged school buildings in the identified typhoon-damaged school buildings in the identified typhoon-stricken places.

C. Composition of Disaster Preparedness and Response Point Persons

a) Chairperson

- Convene the school disaster risk reduction management group and activate the School Disaster Operation Center.
- Coordinate with the local officials of MDCC and BDCC for appropriate support in the event of evacuation.
- Prepare with co-teachers for the school disaster management and contingency plans
- Maintain active members with the chairperson of the MDCC and BDCC.

b) Vice Chairperson

- Perform the function of the SDRRMG chairperson on his absence.

c) Supplies Committee

- Assists the chairperson with the procurement and distribution of required supplies and equipment.

d) Security Committee

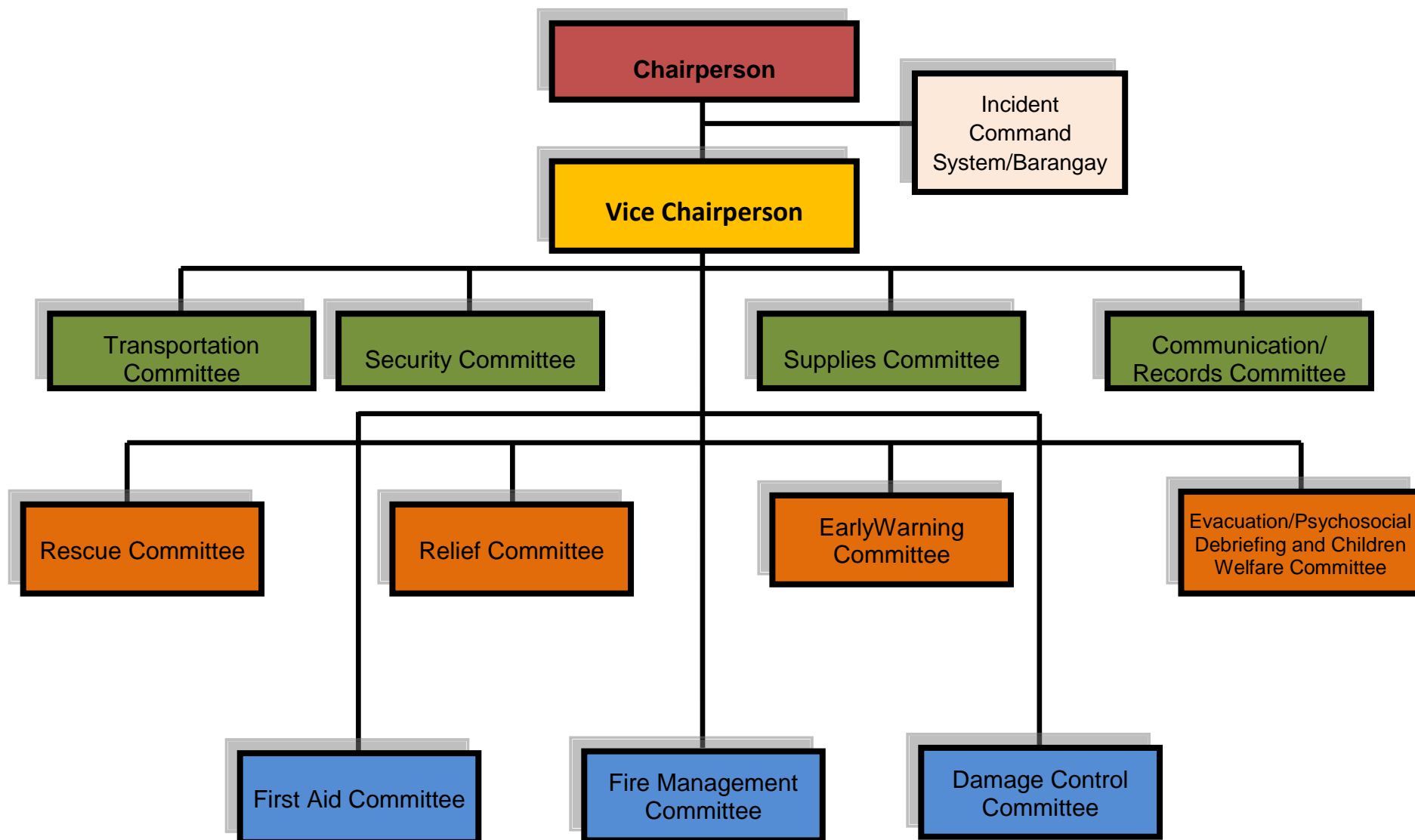
- Organizes and activates the security function of the Barangay Tanods to augment the manpower requirement of the dispatched PNP personnel.

- e) **Communication Committee**
 - Prepares the communication plan and protocols.
- f) **Transportation Committee**
 - Conducts inventory of evacuation and contacts private vehicles owners to solicit their support in case of any impending threat.
- g) **Rescue Committee**
 - Coordinates with the PSDS and SDS, PNRC, BFP, or OCD for training support.
 - Organize and trains rescue service teams
- h) **Relief Committee**
 - Coordinates with the MSWDO for relief assistance.
- i) **Fire Management Committee**
 - Organize the fire brigade team
- j) **Damage Control Committee**
 - Develops damage control plan specific to each anticipated hazards.
- k) **Early Warning Committee**
 - Prepares the official school warning plan and system.
- l) **Evacuation Committee**
 - Develops and continuously reviews the DRR plan.
- m) **First Aid Committee**
 - Prepares a medical kit for the evacuation center.

These are the following individuals/organizations who will receive a copy of SDRRMP.

- LGU
- Supervisor
- Principal
- Teachers
- PTCA Officers
- SDRRMG members

II. SCHOOL DISASTER RISK REDUCTION MANAGEMENT SCHOOL YEAR 2012-2013



Chairperson
REYNILDA C. ALFEREZ, Ph. D.

Vice Chairperson
Kag. Gary Gomez

Transportation Committee

Chairman: Manuel C. Palisbo
Members:
Laarni H. Ybarbia
Perlita G. Estember
Thelma Villares
Arlene Vios
Romellsok

**Communication/
Records Committee**

Chairman: Nardito D. Tumampil Jr.
Co-Chairman: Rey Argawanon
Members:
Kareen Rose J. Daang.
Aileen C. Bolocon
Patrick Jhon B. Doplon
Ian A. Tendoy
Arnel Tinoy
April Joyce Alvarez

Security Committee

Chairman: Patrick Jhon B. Doplon
Members:
Willard Granados
Lordsito Actub
Rose Briones
Mary Jane Langaylangay
Daylene Sayana

Supplies Committee

Chairman: Yolanda D. Magsayo
Members:
Kareen Rose J. Daang.
Luzminda V. Barut
Rochelle S. Munez
Marenil G. Peñaflor
Susan C. Mero
Jinky Ramirez

Relief Committee

Chairman: Benedicta C. Arcaya
Co-Chairman: Mario Duhaylungsod
Members:
Sarah Jean G. Bahian
Micheline A. Judith
Rebecca D. Namantocan
Roselyun G. Peñalosa
Rodney Aldefolla
Adonis Pasco

Early Warning Committee

Chairman: Willard Granados
Members:
Patrick Jhon B. Doplon
Aileen C. Bolocon
Nemfa Pasco
Mitzi Beth E. Mayol
Krystel Gomisong

Rescue Committee

Chairman: Roel C. Togonon
Co-Chairman: Macalintal Tintil
Members:
Genoveval Oyanon
Lorena D. Sanchez
Emalyn Palantang
Sarah P. Batua
Glenn Ganaden
Kenneth Golocino

**Evacuation/Psychosocial
Debriefing and Children
Welfare Committee**

Chairman: Henrylen S. Mc Michael
Co-Chairman: Marilyn Paz Somborio
Members:
Laarni H. Ybarbia
Gay Marie S. Doplon
Carlesita Malolot
Ellen S. Depasucat
Paula Bacarra

Fire Management Committee

Chairman: Manuel C. Palisbo
Members:
Patrick Jhon B. Doplon
Rosana Depasucat
Annie Looc
Marivic A. Fernandez
Dwight Mangubat

First Aid Committee

Chairman: Perlita G. Estember
Members:
Lorena D. Sanchez
Matelde Ano-os
Emma T. Ates
Angeliel Lupas

Damage Control Committee

Chairman: Edilberto b. Luzon
Members:
Manuel C. Palisbo
Purita Molina
Rutchel Ballester
Michelle Sumunod

III. CONTEXT ANALYSIS

HAZARDS	VULNERABILITY	CAPABILITIES
Typhoon/Tidal Wave	<ul style="list-style-type: none"> The school is less vulnerable to typhoon due to its geographical location which typhoon seldom hit Mindanao The school is located a few meters away from the shoreline 	<ul style="list-style-type: none"> Teaching and non-teaching personnel are oriented on the basic inputs of disaster risk reduction School has disaster risk reduction plan which teachers are aware of their corresponding tasks and function including and evacuation plan when emergency strikes The DRR plan is coordinated to barangay officials
Flooding	<ul style="list-style-type: none"> The school lies in a low lying area which is prone to flood when heavy rains and high tide simultaneously happened. Siltation of Bayug river Dumping of trashes in the river The school is situated a few meters away from Bayug river The presence of illegal logging groups in the hinterlands 	<ul style="list-style-type: none"> Teaching and non-teaching personnel are oriented on the basic inputs of disaster risk reduction School has disaster risk reduction plan which teachers are aware of their corresponding tasks and function including evacuation plan when emergency strikes The DRR plan is coordinated to barangay officials
Earthquake	<ul style="list-style-type: none"> The area had been hit twice by EQ since 1972 Seismic condition fault lines traverse the coastal plains and the interior barangays. Significant earthquakes and aftershocks were recorded in the area between the period of 1966 to present 	<ul style="list-style-type: none"> The school has conducted EQ drill wherein teachers and students are already aware of their responsibilities Teaching and non-teaching personnel are oriented on the basic inputs of disaster risk reduction School has disaster risk reduction plan which teachers are aware of their corresponding tasks and function including and evacuation plan when emergency strikes The DRR plan is coordinated to barangay officials
Fire	<ul style="list-style-type: none"> The presence of houses made of light materials surrounding the school The school is located near the city dump site 	<ul style="list-style-type: none"> The school has conducted fire drill wherein teachers and students are already aware of their responsibilities The school has circuit breakers that automatically shut off when more than 60 amperes are used Teaching and non-teaching personnel are oriented on the basic inputs of disaster risk reduction School has disaster risk reduction plan which teachers are aware of their corresponding tasks and function including and evacuation plan when emergency strikes The DRR plan is coordinated to barangay officials Electrical wirings damaged during typhoon Sendong were replaced by new ones New fire extinguisher was purchased Classrooms are concrete

IV. HAZARD INTERPRETATION

HAZARDS	PROBABILITY	CONSEQUENCES
Typhoon	<ul style="list-style-type: none"> Certain 	<ul style="list-style-type: none"> Moderate
Flooding	<ul style="list-style-type: none"> Certain 	<ul style="list-style-type: none"> Moderate
Earthquake	<ul style="list-style-type: none"> Likely 	<ul style="list-style-type: none"> Minor
Fire	<ul style="list-style-type: none"> Likely 	<ul style="list-style-type: none"> Moderate

V. SCHOOL STAFF COMPLEMENT

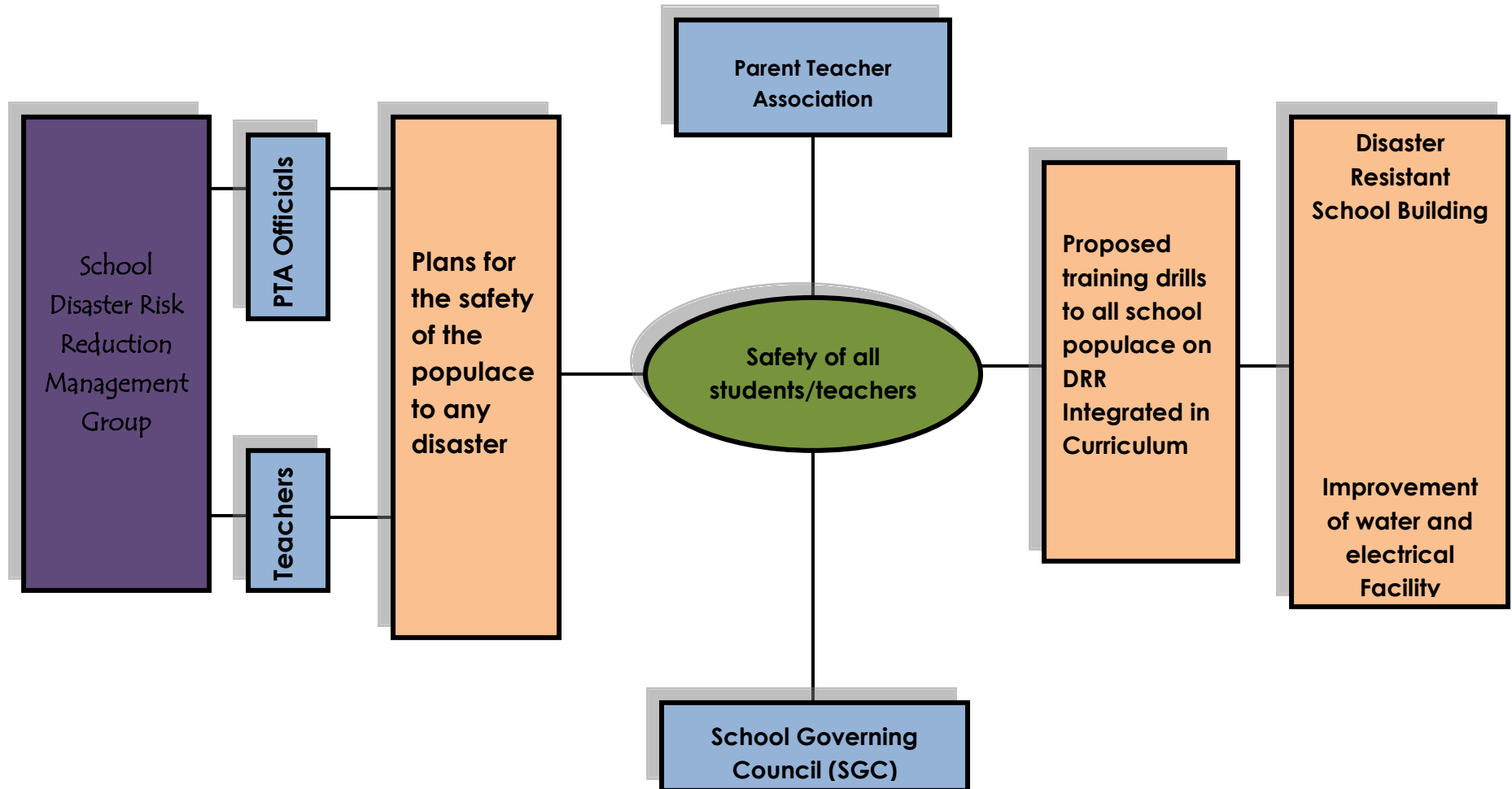
NAME OF TEACHER	YEAR ASSIGNED/DESIGNATION
1. Michelene A. Judith	I-Mapagkatiwalaan Adviser, Relief Committee
2. Lorena D. Sanchez	I-Mapagkumbaba Adviser, Rescue & First Aid Committee
3. Henrylen S. Mc Michael	-I Mapagmahal Adviser, Evacuation Committee
4. Laarni H. Ybarbia	II-Magalang Adviser, Relief Committee
5. Sarah Jean G. Bahian	II-Mahinahon Adviser, Relief Committee
6. Roel C. Togonon	II- Malikhain Adviser, Rescue Committee
7. Perlita G. Estember	III- Matatag Adviser, First Aid Committee
8. Luzminda V. Barut	III- Maunawain Adviser, Supplies Committee
9. Gay marie S. Doplon	IV- Matulungin Adviser, Evacuation Committee
10. Edilberto B. Luzon	IV- Maka-Diyos, Damage Control Committee
11. Genoveva I. Oyanon	English Teacher/Rescue Committee
12. Benedicta C. Arcaya	English Teacher/Librarian/Relief Committee
13. Manuel C. Palisbo	Tech Voc Teacher/Transportation Committee
14. Patrick- Jhon B. Doplon	ICF Teacher/Security Committee
15. Nardito D. Tumampil Jr.	Physics Teacher/Communication / Records Committee
16. Aileen C. Bolocon	MAPEH Teacher/Communication / Records Committee
17. Kareen Rose J. Daang	Math Teacher/Supplies Committee & ICT Coordinator
18. Yolanda D. Magsayo	Guidance Counselor Designate/Supplies Committee
19. Reynilda C. Alferez, Ph. D.	School Head

VI. STAKEHOLDERS CAPACITY ASSESSMENT

NAME	Contributions to DRR
1. DepEd (School Level, Division) 2. PTCA/SGC 3. LGU's (Municipal/Brgy. Level) 4. NGO's (Save the Children, Red Cross, CFSI, IOM, BDA/MYROi)	- Educating the school community (Capability Bldg.) - Monitor, Security, Rescue, Supplies - Transportation, Security & Supplies - Capability Bldg. Supplies

VII. SCHOOL DEVELOPMENT PLAN FRAMEWORK

A. DEVELOPMENT PLAN FRAMEWORK



VIII. CONTINGENCY PLANS

A. Preparation for Flood

LEVEL	CRITERIA	INTERPRETATION	WARNING SIGNALS	REQUIRED ACTIONS
0	No Flood	Classes on going	None	➤ Conduct Classroom Instructions as usual in classrooms
1	Flood water clog and overflow school drainage ditches	Alert	3 bell beat	➤ Move all school records and other important things to higher area or location
2	Flood water begins to enter classrooms	Prepare to evacuate	5 bell beat	➤ Shut down all power sources, move students to an elevated place
3	Flood water reached 1 foot from the floor	School campus completely evacuated	10 rapid bell beat	➤ Evacuate to safe place outside the campus and bring important things

B. Preparation for Earthquake

LEVEL	CRITERIA	INTERPRETATION	WARNING SIGNALS	REQUIRED ACTIONS
0	No Earthquake	Classes on going	None	➤ Conduct Classroom Instructions as usual in classrooms
1	Earthquake	Alert	Rapid Beating of Bell	<ul style="list-style-type: none"> ➤ Instruct students to stay calm & do not panic ➤ Let them cover their head ➤ Follow the evacuation route
2	Presence of the earthquake	Classes disrupted by the quake	Rapid Beating of Bell	<ul style="list-style-type: none"> ➤ Instruct students to stay calm & do not panic ➤ Cover their head, wait for the stop of tremble ➤ Follow the evacuation route
3	Presence of the shocks	School completely evacuated	none	<ul style="list-style-type: none"> ➤ Suspension of classes ➤ Listen to the news advisory

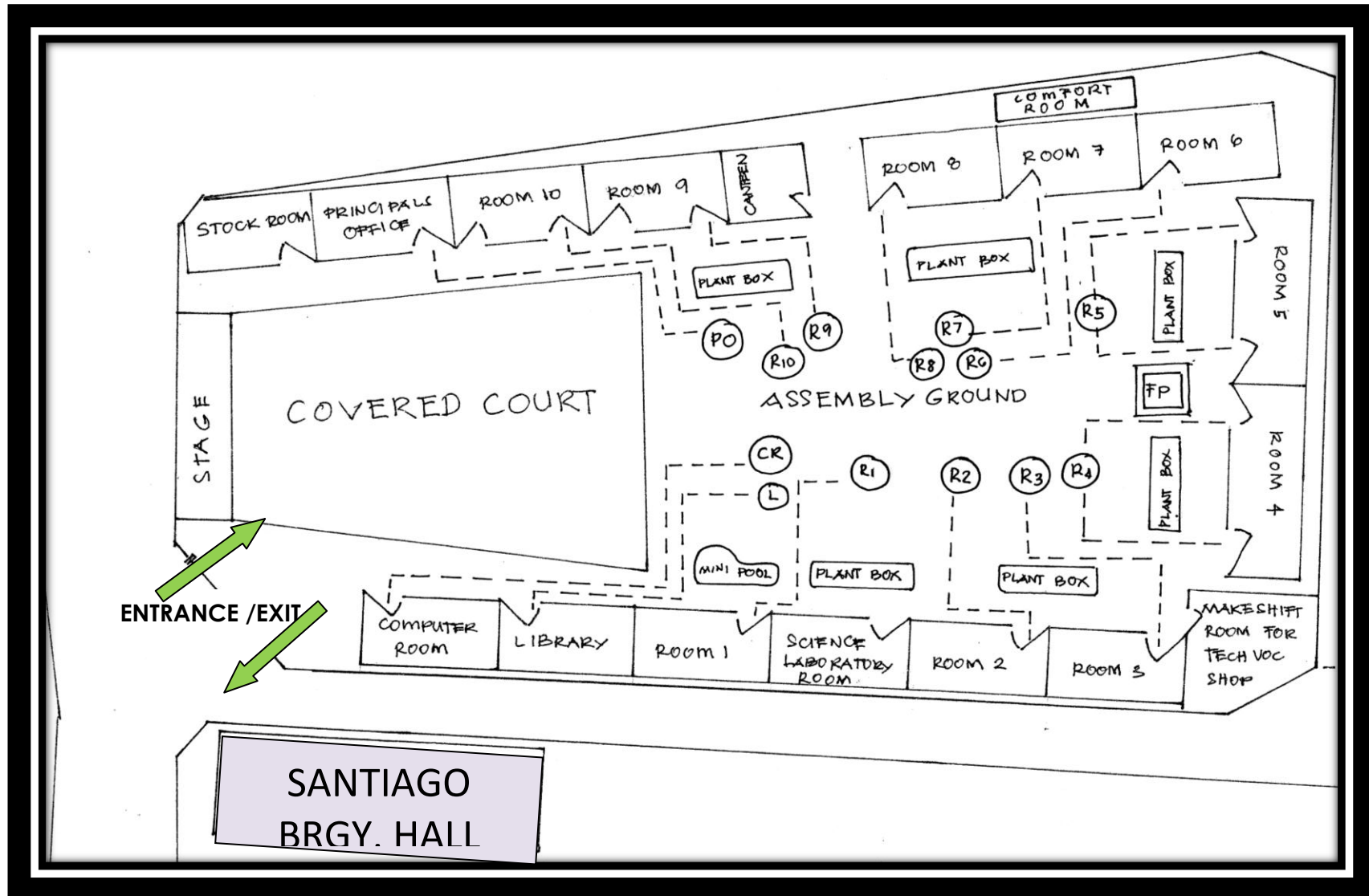
C. Preparation for Fire

LEVEL	CRITERIA	INTERPRETATION	WARNING SIGNALS	REQUIRED ACTIONS
0	No Fire	Classes on going	None	➤ Conduct Classroom Instructions as usual in classrooms
1	Fire Preparedness	Classes on going	Rapid Beating of Bell	➤ Conduct of Fire Drill in the school
2	Presence of fire	Determine the level of fire	Alarm the school populace of the presence of fire by rapid beating of the bell	➤ Vacate the classroom following the escape route as practiced in the drill
3	Presence of the fire	School completely evacuated	School off limits to bystanders	➤ Suspension of classes

D. Preparation for Typhoon

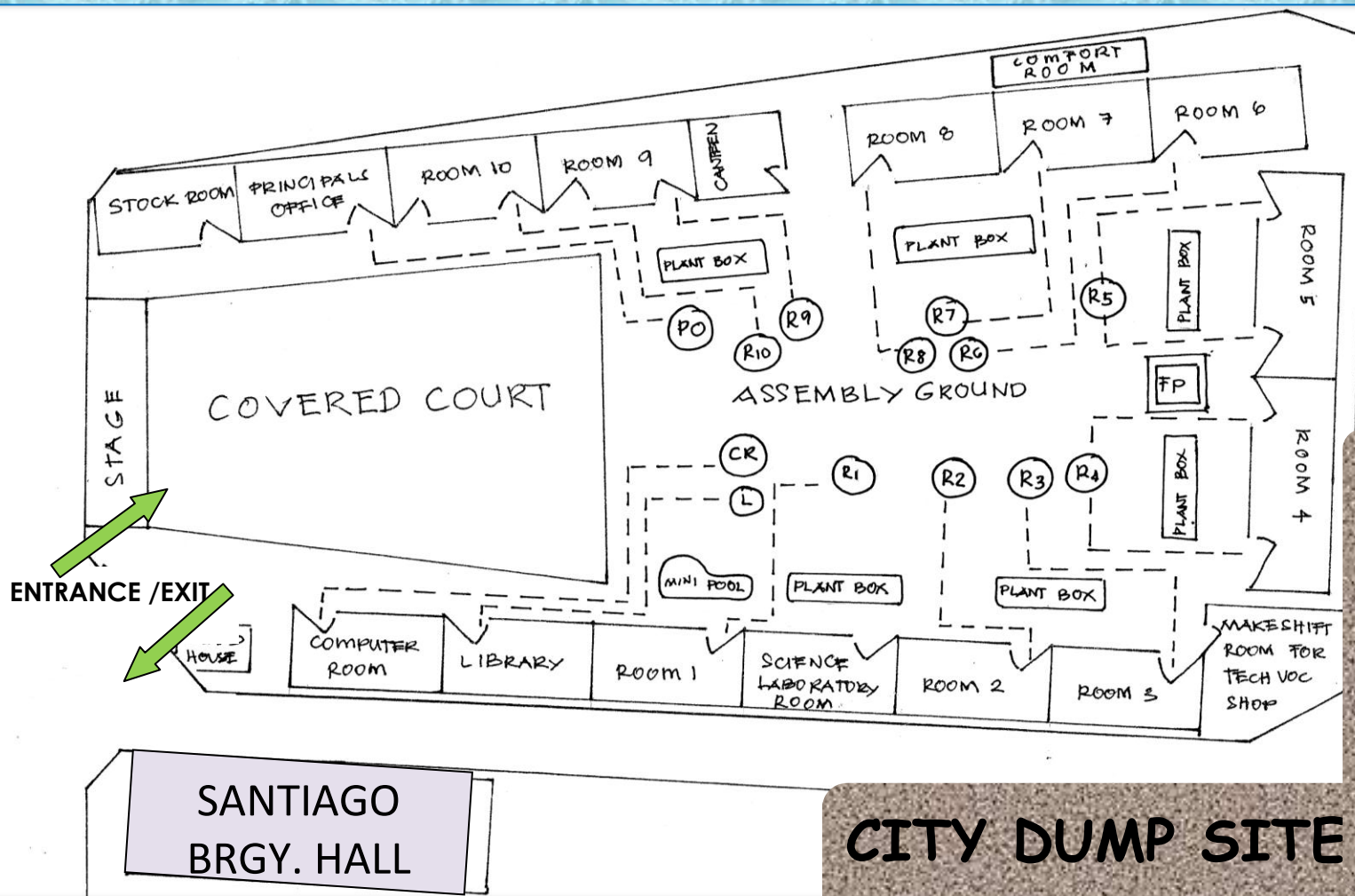
LEVEL	CRITERIA	INTERPRETATION	WARNING SIGNALS	REQUIRED ACTIONS
0	No Typhoon	Classes on going	None	➤ Conduct Classroom Instructions as usual in classrooms
1	Typhoon Preparedness	Classes on going	Listen to news advisory	➤ Instruct teachers to secure their books, IM's and other school forms
2	Presence of the typhoon Signal Number 1	Classes on going	Typhoon Signal Number 1	<ul style="list-style-type: none"> ➤ Shortening of time ➤ Advise students to stay in their classrooms ➤ Integration of danger that typhoon might bring
3	Presence Typhoon Signal Number 2	Classes are suspended	Typhoon Signal Number 2	➤ Classes are suspended & advise to stay home to listen to news advisory

IX. ICEHS – SANTIAGO EVACUATION PLAN



RIVER

S
E
A



Evacuation Process/Steps:

1. When 5 beats of bell are heard, all the students are instructed by their class advisers to go out from their respective classrooms and stay in the assembly area.
2. The principal will inform the barangay captain of the evacuation of the students and teachers.
3. When students and teachers are gathered in the designated assembly area, the school head upon arriving at a final decision, will instruct all the students and the teachers to begin moving out from the area using the entrance gate as exit point.
4. The barangay officials together with the principal will manage the evacuation process leading to the identified evacuation center.
5. For flood and typhoon, the students and teachers will proceed directly to a barangay covered court or identified higher or safer place. For earthquake, the students and teachers will proceed to an open and safe area. For fire, the students and the teachers will move out from the school to an open and safe place.