



Southeast Asian
Ministers of Education
Organization



MEXT

MINISTRY OF EDUCATION,
CULTURE, SPORTS,
SCIENCE AND TECHNOLOGY-JAPAN



Bank of Tokyo-Mitsubishi UFJ

1. Name of your school: : SMP Negeri 4 Denpasar
2. Full address : Jalan Gunung Agung Denpasar Bali Indonesia
3. Post code : 80118
4. Country : Indonesia
5. Telephone number : (0361) 422486
6. Fax number : (0361) 422486
7. Name of the Head Master : Drs I Wayan Dhania,M.Pd
8. Name of Teacher Coordinator: : I Nyoman Sukasta,S.Pd
9. Email address : smpn4@yahoo.com/kastama_agus@yahoo.com
10. Education level : S2 (Pasca Sarjana)
11. Number of the teachers : 62 people
12. Number of the students : 1470 people
13. Teachers :
 1. Drs I wayan Dhania,M.Pd
 2. Drs I Made Suastika
 3. Dra Desak Nyoman Putriadi
 4. I Nyoman Sukasta, S.Pd
 5. Ir Luh Wayan Danthi Widyasih,S.Pd,M.Pd
 6. Drs I Wayan Sumerta
 7. Drs I Gusti Made Suarjana,M.Si
 8. I Putu Sudika,S.Pd,M.Pd
 9. Ni Made Mustini,S.Pd
 10. Ni Made Mioni,S.Pd
 11. Ni Made Ciriasih,S.Pd
 12. Drs I Made Suarjana
 13. Made Mertayasa Wijaya,S.Pd
 14. Ni Ketut Rentini,S.Pd
14. Students : All of student in SMPN4 Denpasar

A. THE REPORT OF THE IMPLEMENTATION OF ESD ACTIVITIES AT SMP N 4 DENPASAR

N O	ACTIVITIES	IMPLEMENTATION	TARGET	RESULT	FOLLOW UP
1	Design syllabus and lesson plan which is integrated with the environment	Carried out teachers 'workshop	All teachers	They are able to insert the environment material in every school subject	Revision of lesson plan
2	Completing decorating plants	December 15 th 2012	School yard and its around	The school becomes shady, cool and beautiful	Done by the new students based on schedule
3	Completing cleaning facilities	January 16 th , 2012	Completing cleaning tools in every class	Always keeping the class and environment clean	Keep the school environment clean
4	Regulate the big trees to keep the school shady and beautiful	July 2009	All high trees in the school yard	Keep the trees beautiful	Always keep and regulate the shady plants regularly
5	Preparing the organic garbage processing place to make compos	July 2009	School and environment	Exploit organic garbage as compos in school plants	To process organic garbage to make compos
6	To facilitate the organic garbage processing tool	July 2009	School and its environment	School environment becomes clean	Separate organic and nonorganic garbage
7	Carried out social service outside the school and replantation in mangrove forest joined by 10 teachers and 40 students		Teachers and students	To introduce good environment to students and plant trees in mangrove forest	Making seed and plan trees outside school
8	Train the teacher and the students about environment (5	August 5 th , 2009	Students and teachers	Develop knowledge about	To implement the

	teachers and 5 students)			environment	knowledge at school and outside
9	Lecture and socialize the school program related environment by 2 resources and 400 participants	August 2009	All school person, students and staff	The school person has knowledge about environment	To implement lecture material in environment activities
10	Documentation and evaluation (monitoring)environment preservation activities	August 2009	School and outside	To know the environment development about the plants they have planted	To preserve the environment continuously
11	To join the plantation at Sanur beach involve 900 students and teachers related to school anniversary	August 2009	All school person, teachers and staff	School members aware to the existence of environment in the human life	Doing the activities continuously
12	To plant trees in Mangrove forest with students of class 8 about 100 students and 10 teachers on November 7 th 2011	August 2009	Students of class 7 and 8, teachers and staff	All school person aware the existence of forest in keeping ecosystem and habitat in it	Doing this activities sustainable
13	To maintain environment and school tools by providing cleaning tools	August 2009	All school person	All school members aware about keeping the school facilities school environment	To accustom to live clean in school environment
14	To realize the prohibition or cut the trees at school	August 2009	All school person	The plants at school and school garden fertile, and shady	Keep environment preservation
15	Socialize how to make	December 2009	All students	Able to	Maintenance

	seed		who joined environmen t local subject	produce seed and cuttings	by watering the palnts

B. Background of SMPN 4 Denpasar to be ESD

SMP N 4 Denpasar is one of them junior high school that is in Denpasar. This school on the land area in 10.300 M² that before her named is Sekolah Teknik Negeri (STN) that standing in 1942 and integration to be SMP Negeri 4 Denpasar in 1 April 1979. That's all SMP Negeri 4 Denpasar was 33 years old. In age so many thing that enhancements in this school.

Realize it SMP Negeri 4 Denpasar since 1979 began to build study room with environmentally sound approach or environmentally friendly in learning activities. Therefore in learning activities in SMP Negeri 4 Denpasar not only do in class but also in outdoor or yard in this school by utilizing the existing environment such as: school garden, school yard, and temple complete with learning instruments. Thus with environmentally sound approach in order to create a school environment that is clean, health and beautiful with no disregard for all people in the school discipline.in pursuit of cleanliness and maintenance of the plants regularly and continuously, to be pursued by implementing a layered work that is the involvement of students, staff, and teachers and supported by the school committee with a plan as follows:

- Maintenance of the garden and cleanliness in front of class, performed by students in related class and its implementation monitored by the teacher.
- Beside all of students, the garden is also treated and developed by three employees (honorary) who works every day.
- For hygiene of waste performed by an employee who work every day except in class cleaned by students (appropriate to class picket)
- In general hygiene of waste performed by all of students every Saturday and Monday on the first and third week.
- Hygiene of waste , maintenance of the garden (orchid garden), office, held every Saturday, by all of staffs and teacher (according schedule)

From that's all activities so SMP Negeri 4 Denpasar as Adiwiyata School provide wide impact both local, regional, or nation. This can be proved many guests from other school both local as well as national to conduct a comparative study and learn about environment school.

Vision and Mission SMP Negeri 4 Denpasar

1. Vision : **excellent in quality and competitive** based on into environmental, culture, discipline, faith and piety

Indicators of vision:

- establishment of improvement and development of curriculum content
- establishment of an effective learning process

- establishment of an adequate facilities and infrastructure
- establishment of the balancing of human resources and education staff
- Establishment of principles of healthy behavior with environmental and management of a healthy school
- Establishment of an achievement in academic
- Establishment of an achievement in non academic
- Establishment of discipline in school
- Establishment of activities in the religious
- Establishment all of students are aware and concern about environment with 4 R (Reduce, Reuse, Recycle, Replant)

2. Mission:

- Implement of development KTSP (Kurikulum Tingkat Satuan Pendidikan)
- Implement of development learning tool and syllabus
- Implement of development plan learning process
- Implement of CTL Strategy in learning process
- Implement of development material learning process
- Implement of achieving basic competency graduation standard
- Implement of standard graduation every years
- Implement of development an insight into environment
- Implement of maintenance environment that clean and health
- Implement of development the winner in academic and non academics competitions
- Implement equipment of education
- Created learning environment is conducive
- Implement of cross subsidy in payment of education
- Implement of development teacher professionalism
- Implement of enhancement educational personnel quality
- Implement of enhancement administrations personnel
- Implement of development and complete school administration
- Implement of monitored and evaluated by head master
- Implement of clinical supervision by head master
- Implement of development activity Wiyata mandala
- Implement cleanliness of the environment sustainable
- Implement activities to reuse salvage
- Implement of recycling waste into disposable items
- Implement activities nurseries and reforestation in order to create a shady environment
- Implement activities routines are eco-friendly
- Implement of maintenance of the garden and environment sustainable

Purpose

- improving the condition of the school a comfortable and safe
- Improving awareness schools with environmental sustainability
- Cultivate a clean, healthy environment of the school and outside school
- Increase students' knowledge about preserving the environment and away from environmentally damaging actions
- Invites students to recognize the environment with a visit to the Mangrove Forest

C. Some implementation of activities ESD SMP N 4 Denpasar

1. Preparation of environmental curriculum (All subject)
2. Everyday hygiene activities by all citizen of the school
3. To hold a public hygiene (New students activity)
4. Doing shading and structuring the school park
5. Doing nursery plants to replace old plants
6. Sending students and teachers to attend environmental seminars
7. conduct planting seeds at the mangrove forest serangan
8. Planting seedlings in the Mertasari beach
9. Perform cleaning garbage on the sanur beach and serangan beach
10. Making the trash can organic and inorganic
11. making a compost place
12. Making holes infiltration (innovation clear water and sanitation)
13. Supplying household waste in cooperation with the Department of Public Works Rabic pro)
14. to hold hygiene activities at the mangrove forest (plastic garbage collection
15. to hold a contest creativity of students by using second-hand product (become a skill and productive products).
16. Making exhibitions of Environmental
17. Provide social benefits to the orphanage in order to reset the school year
18. Conducting field trips to conduct research into the botanical gardens eka raya candi kuning well for Horticulture Plant Breeding Institute (biology) Tabanan regency of Bali Province
19. Entered into a collaboration with various agencies / institutions for the development of environmentally sound school

D. Some achievement SMPN 4 Denpasar in the environmental category

1. The first winner in the province level 2005
2. Following UKS competition in the national level 2006
3. The first winner KSPAN in the regency level 2006
4. The second winner shade in the province level 2007
5. Follow candidate of school Adiwiyata National level and to be nominated in 2008
6. Set a SMPN 4 denpasar as school of Adiwiyata in 2009
7. A school Adiwiyata Mandiri in 2010

E. Resource used for implementing the activity/programme.

1. Sweep for cleanliness activity at school and the outside of school.
2. Hoes for the planting of trees.
3. Plants or seeds to replace the old plant.
4. The wheelie bin for waste that is not used.
5. Large buckets and cans for sorting organic waste and inorganic.

F. Monitoring and evaluation mechanism and result.

1. To give positive results to changes in behavior at school and community in keeping the environment clean.

2. Reduction in standing water because there is absorption of water and a clean environment from household waste is collected in RABICPRO.
3. The awareness of forest conservation through the turn of the old trees at school or protected forests.
4. Creation of healthy life because from the plant result the more oxygen

G.

Name of partner	Roles or Contributions
a. PPTI (Associations of plant lover Indonesia)	1. provision of a rare plant 2. rare plant maintenance techniques
b. P .U (Dinas Pekerjaan Umum) (Public work departement)	1. established raticpro for the storage of household waste 2.making holes of water infiltration
c. SGPL (teachers environmentalists) (Sekeha guru pemerhati lingkungan)	1. Training on environmental maintenance 2.conducted reforestation activities at mangrove forest
d. Puskesmas (Health service)	1. healthcare training to the citizens of the school 2. environmental hygiene
e. BLH (Badan Lingkungan Hidup) (environmental agency)	1. giving lectures about the environment 2. provision of seed plants 3. planting trees in the mangrove forest with school 4. environmental hygiene at the river

H. Benefit/ impact of the activity/programme to teachers, students and the community.

1. SMPN 4 denpasar has a rare plant to maintain its sustainability and hold water when it rains.
 2. To know the techniques of environmental maintenance.
 3. So that no air pollution and to keep the air clean.
 4. School community has the processing about the importance of maintaining processing have household waste that was disposed of in school and placed in RABICPRO.
 5. To Know about how the process RAPBICPRO.
 6. SMPN 4 denpasar has a lot of holes infiltration to anticipate if there is standing water due to heavy rain.
 7. To know about outbreaks of disease.
 8. To get information about 3R (Reduce, Reuse, Recycle).
 9. Use of recycled waste into material that is both economically.
- I. Plan for sustainability and plan for the future.
- a. Plan for sustainability
 1. environmental knowledge
 2. Change behavior.
 3. Have the facilities and infrastructure for environmental activities.
 4. Have the skill.
 5. Improvement of the curriculum.
 6. As a learning material in the class.
 - b. Plan for the future.
 1. The creation of beautiful environments.
 2. Reduce of environmental damage.
 3. Civilize the behavior of society to maintain an environment.
 4. To increase public confidence with SMPN 4 Denpasar

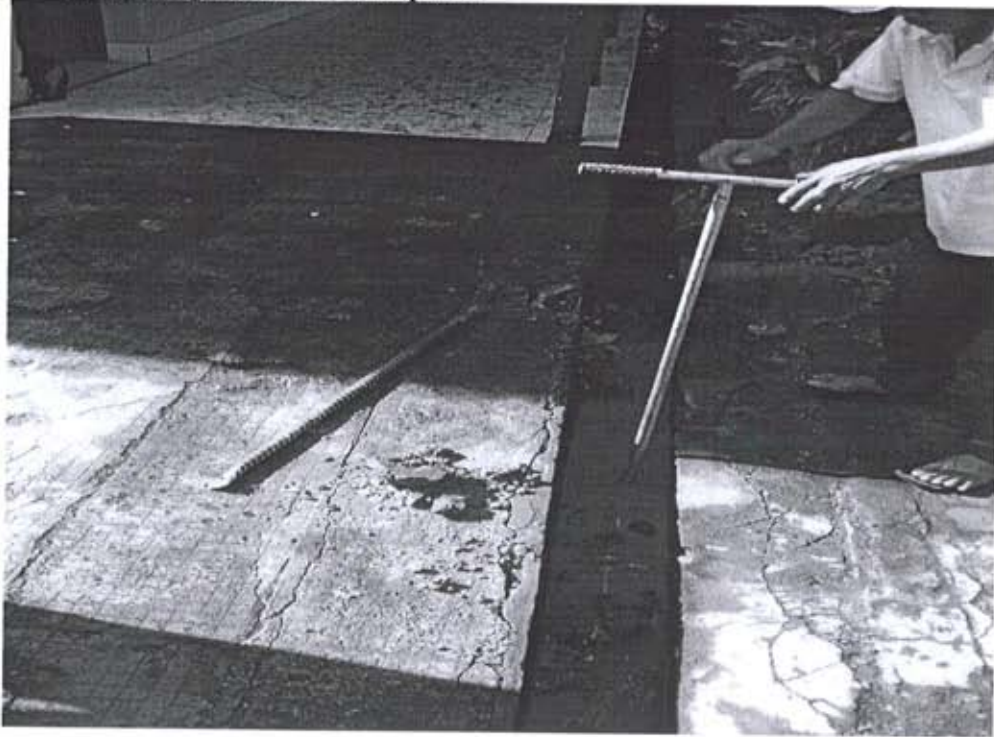
1. Delivery of the trophy by President Republic of Indonesia for SMPN 4 Denpasar as The Winner of Adiwiyata Mandiri national level



2. Household Waste Processing Tool (Rabicpro)



3. Making Holes Water Uptake



4. Skills students by utilize consumable product



**5. Assessment Team Adiwiyata Mandiri assessing students' craft
Derived from the Garden School**



6. Hygiene in the yard and parking lot in the school



7. The students before holding a clean get information from teacher



8. The student's creation to maintain cultural of Bali



9. Students Performing Organic and inorganic waste segregation



10. Planting of seedlings at the mangrove forest



11. Planting of seedlings at the Mertasari sanur beach





12. Plastic Waste Cleanup activities at the Mangrove Forest



13. Planting of seedlings at the Serangan beach



14. Assessment team Adiwiyata Mandiri Center





15. Teachers conducting the arrangement of trees



