

HOW TO CONDUCT AN EARTHQUAKE DRILL IN SCHOOL

DEPED ORDER NO. 48, S. 2012 (INC.)



EXQUIL BRYAN P. ARON, EPS-I
DIVISION DRR COORDINATOR

JUNE 27, 2012. GAZPACHOS. ILIGAN CITY

STAGES OF AN EARTHQUAKE DRILL

STAGE 1: PLANNING

Form a School Disaster Management Committee

Over-all Coordinator, First Aid Team, Fire Safety Team, Communication Team, Building Safety Inspection Team, Evacuation Team and Site Security Team

Prepare EARTHQUAKE SURVIVAL KIT

14 Basic Items

SDMC should.....

- Have the yearly update on information of school population
- Prepare the most recent school map
- Prepare the building floor plan of each building



SDMC should conduct a **SCHOOL WATCHING EXERCISE**

- Observe safe and unsafe zones
- Suggest corrections for improvements
- Assess the structural integrity of the building/s
- Assess if the school location is tsunami prone

GOOD practices and safe zones:

- Swing out door
- Wide corridors
- Wide open space for evacuation
- Fire exists
- Public alarm system

Some of the UNSAFE zones:

- Windows and glass panes
- Book shelves, machinery, cabinets and furniture that may topple or slide
- Narrow alleys

STAGE 2: DEVELOPING the EARTHQUAKE EVACUATION PLAN

- Use available OPEN SPACES nearest to the building

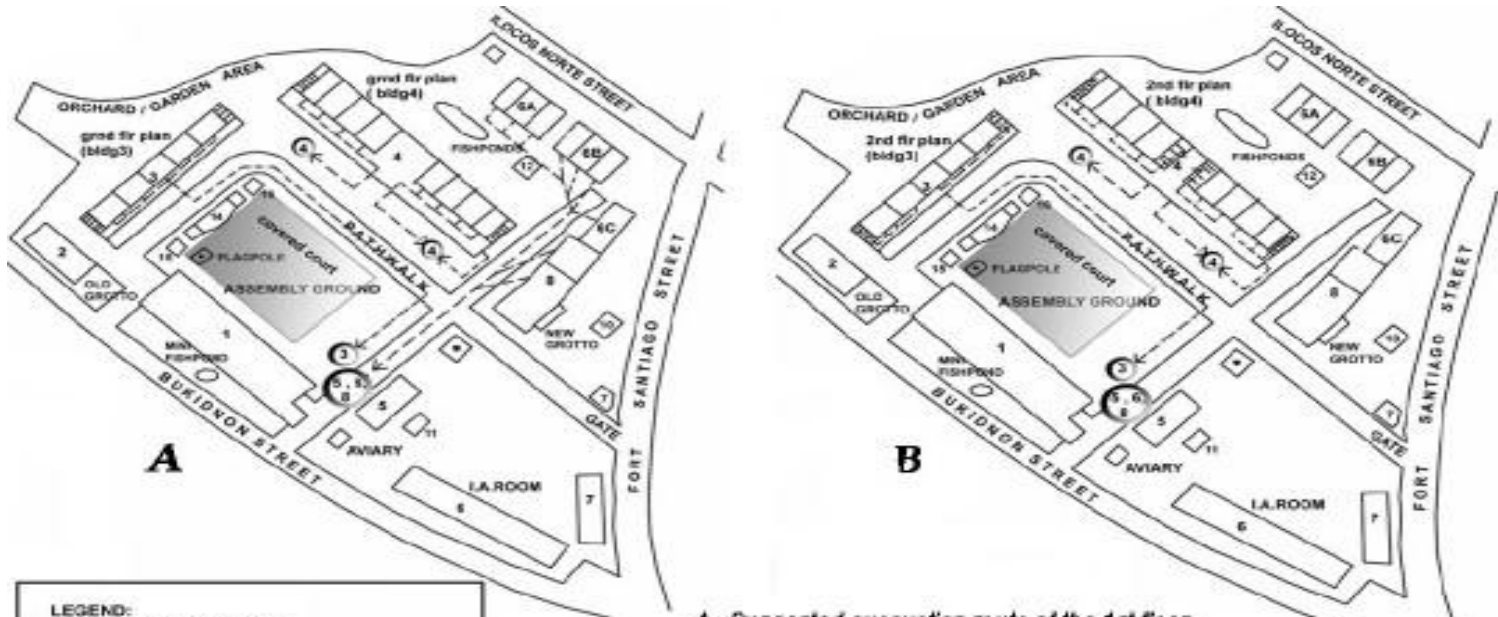


- Determine if there is sufficient open space for all, set a buffer zone from the building

length x width = area

How many students? / 1 square meter

- Make sure that evacuation route will **not** expose the students to additional hazards



- LEGEND:**
1. ADMINISTRATION BLDG
 2. BAGONG LIPUNAN BLDG (3 CLASSROOMS)
 3. PIMENTEL BLDG. (2 STOREY)
 4. IMELDA BLDG. (2 STOREY, 15 RMS)
 5. HOME ECONOMICS BLDG
 6. PREFAB BLDG (I.A. ROOM)
 7. KINDER LAND BLDG
 8. CANTEEN
 9. GUARDHOUSE
 10. BOYSCOUT CORNER
 11. GIRLS SCOUT CORNER
 12. REST HOUSE (TEACHERS HANGOUT)
 13. INCENERATOR
 14. STAGE
 15. GSP INSIGNIA
 16. BSP INSIGNIA

A. Suggested evacuation route of the 1st floor of buildings 3, 4 and 6 (A, B & C) as well as buildings 5 & 8

B. Suggested evacuation route for the 2nd floor occupants of buildings 3 & 4

Fig. 1. Sample Evacuation Route for Bago Bantay Elementary School designed by PHIVOLCS. The actual Earthquake Drill Facilitated by PHIVOLCS in cooperation with DepEd-NCR was conducted on 25 November 2003.

STAGE 3: Orientation Prior to the Conduct of an Earthquake Drill

A. Preparations

- 1. Conduct of lectures about earthquake
- 2. Conduct classroom hazard observation activity
- 3. Introduce evacuation plan
- 4. Introduce assigned evacuation area
- 5. Post the school evacuation map in every classroom and bulletin board
- 6. Assign student-in-charge of making sure the door is open during shaking
- 7. Assign observers and evaluators who will give comments and suggestions

STAGE 3: Orientation Prior to the Conduct of an Earthquake Drill

A. Preparations

- 8. Inform the neighborhood about the drill
- 9. Check available alarm system
- 10. Assign class marshall
- 11. Take note of persons with disabilities (PWD), pregnant and elderly and identify their locations for evacuation
- 12. Assign marshalls to assist the PWD, pregnant and elderly during evacuation

STAGE 3: Orientation Prior to the Conduct of an Earthquake Drill

B. Protect yourself

What to do DURING an Earthquake

- **DUCK, COVER AND HOLD**
- Watch out for falling objects
- Keep calm and don't panic



STAGE 4: Actual Conduct of an Earthquake Drill

PHASES OF AN EARTHQUAKE DRILL

Phase 1. ALARM

During the drill, the 1-minute alarm indicates earthquake or shaking.

Phase 2. RESPONSE

While the alarm is ongoing, everyone should perform “duck, cover and hold”. Remain in this position until the “shaking” stops.

STAGE 4: Actual Conduct of an Earthquake Drill

PHASES OF AN EARTHQUAKE DRILL

Phase 3. EVACUATION

As soon as the shaking stops, immediately evacuate the school building and proceed to identified evacuation areas using the pre-determined routes guided by the class marshall or teacher.

Phase 4. ASSEMBLY

At the designated evacuation area, students must be grouped together according to the class where they belong.

STAGE 4: Actual Conduct of an Earthquake Drill

PHASES OF AN EARTHQUAKE DRILL

Phase 5. HEAD COUNT

Teachers should check and make sure all students are accounted for.

Phase 6. EVALUATION

The over-all coordinator will announce the termination of drill or “All clear”.

REFERENCES;

- DepEd Order No.48, s. 2012 (Incls)
- Philippine Institute of Volcanology and Seismology
- Disaster Risk Reduction Resource Manual

- HOME
- ABOUT US
- REAL-TIME WEATHER
- FLOOD FORECAST
- CLIMATOLOGY
- DISASTER REDUCTION
- ASTRONOMY

DOST Service Institutes

DOST Agencies [v] DOST Regional Offices [v] [] Search DOST

DOST HOME | DOST-MAIL | DOSTBOARD | DOST HELPCENTER


PAGASA

Philippine Atmospheric, Geophysical & Astronomical Services Administration

Weather
 Issued at: 5:00 p.m., 26 June 2012
[\(click here to download 5 p.m., 24-Hour Weather Forecast and Extended Weather Outlook for Selected Cities\)](#)

At 4:00 PM today, the active low pressure area has developed into a tropical depression and was named "DINDO". It was estimated based on satellite and surface data at 670 km east northeast of Virac, Catanduanes (14.2°N, 131.3°E) with maximum sustained winds of 55 kph. It is forecast to move west northwest at 19 kph. Southwest monsoon affecting Visayas and Mindanao.

Metro Manila

 Moderate to Occ. Strong:
Southwest-West

Manila Bay:
Moderate to Occ. Rough

24°C to 31°C

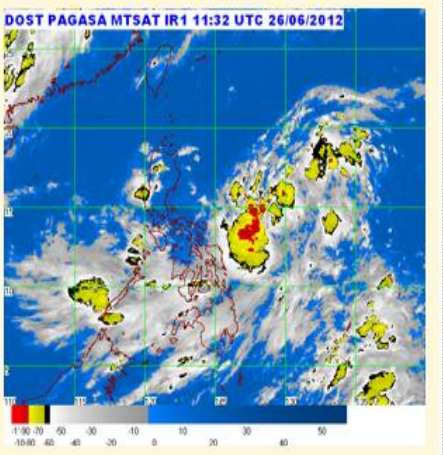
[Read more...](#)

Tropical Cyclone Update
 Issued at: 5:00 p.m., 26 June 2012
[\(click here to download 5:00 p.m. bulletin-Adobe PDF format\)](#)

The active low pressure area east of Virac, Catanduanes has developed into a tropical depression and was named "DINDO".
[More Update](#)

Please refresh the page to ensure up-to-date information>

MTSAT ENHANCED IR Satellite Image for 7:32 p.m., 26 June 2012



For the latest in weather news, call our **new** 24-hour hotline at **433- ULAN (433-8526)**

SMART subscribers can now receive announcements and advisories thru SMS
[More details](#)

 follow us on twitter  Like us on Facebook

PAGASA-DOST
dost_pagasa

dost_pagasa as of 9:41pm, watch for thunderstorm formation is likely within the next 12 hrs.

GUIDELINES ON THE IMPLEMENTATION OF EO NO. 66, S. 2012

- Automatic cancellation/Suspension of classes
- When Signal No.1- P/Pri- Pre-school and Kindergarten
- When Signal No. 2- to include Elem. And Sec. classes
- When Signal No. 3- PAGASA